

BUTTERFLIES

collected in

the

Shere Valley, East Africa

---

FM.





*Common*











*atrica melagris*

*Common always  
on paths*









Common always  
ou patte











*Cyba I. da*

*in shade*







*in shade*









*Diadema dubia*

*Common*





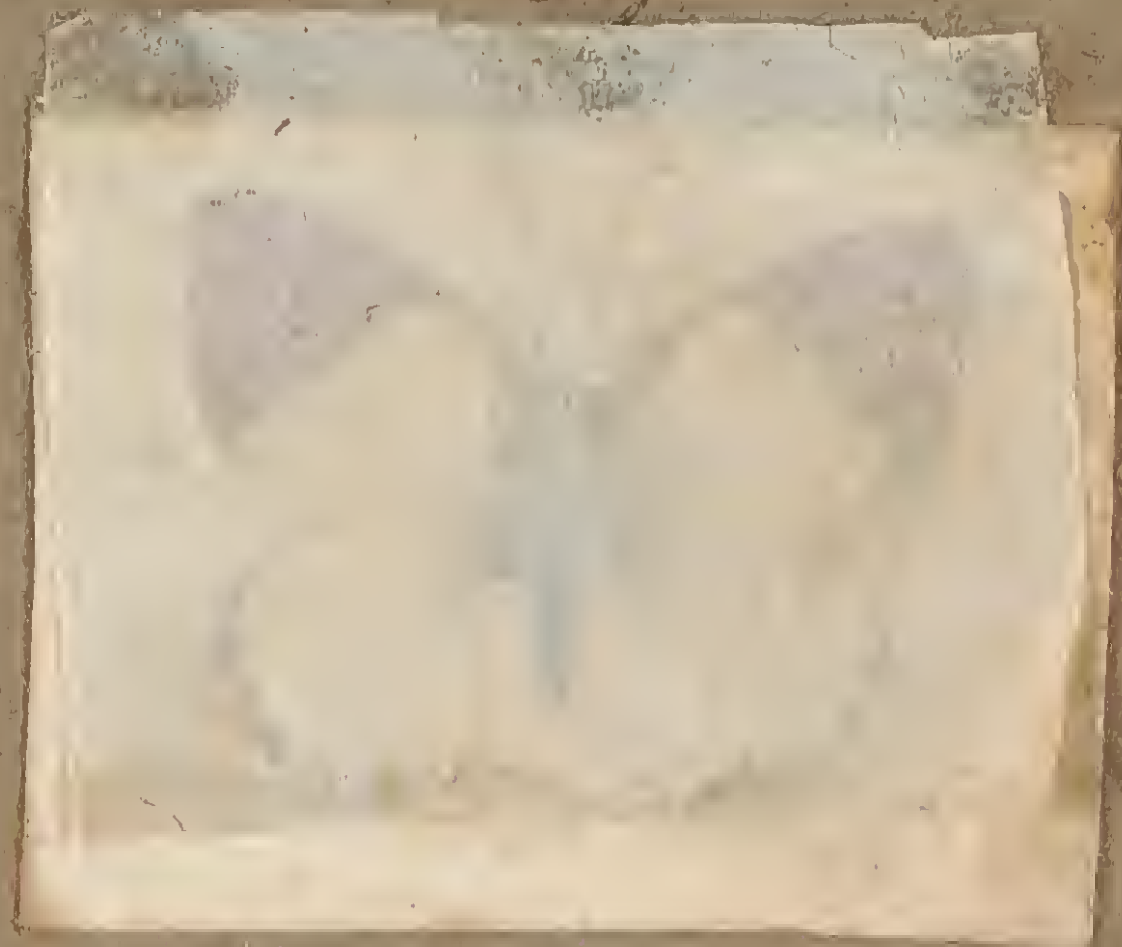


*Common*





a large variety of different  
sizes







*Differens*









Chambers Part  
5 - 1ves. 22 at Ent. 500











*Common*









*Common*





*Swift of flight  
always on trees, uncommon*









also known in hill country



P. Pyades











"Cleopatra" very rapid in flight  
Caterpillars green, 4 spots on head  
like a coronet



Cleopatra



"  
a very  
smaller spe  
like la



*Chrysobothris Polina*



*Chrysobothris Polina*



"The widows"  
rare, fine sailing flight







"The widowed"  
rare, fine collection



*Diatma Antidote*





very swift, entirely on trees  
especially on M'Quate trees





very swift, entirely  
specially on M'Gu



*Charaxes locusts*





*Common*









*Acraea notalica*



*Acraea notalica*



"Mark Anthony"  
this forms a pair with the Cleopatra butterfly



bred by HA  
caterpillars same as the Cleopatra butterfly



*Chorax*  
*... sp.*



*Charaxes Pallas*



bred by *HA*  
 caterpillars same as the Cleopatra butterfly

























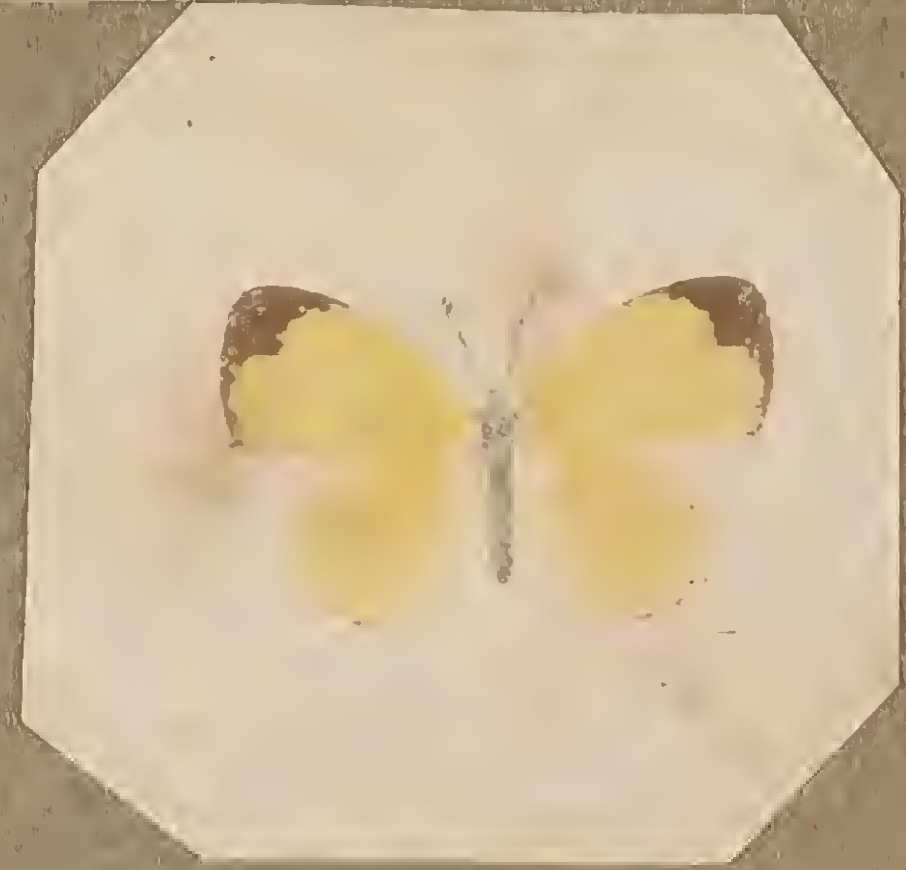
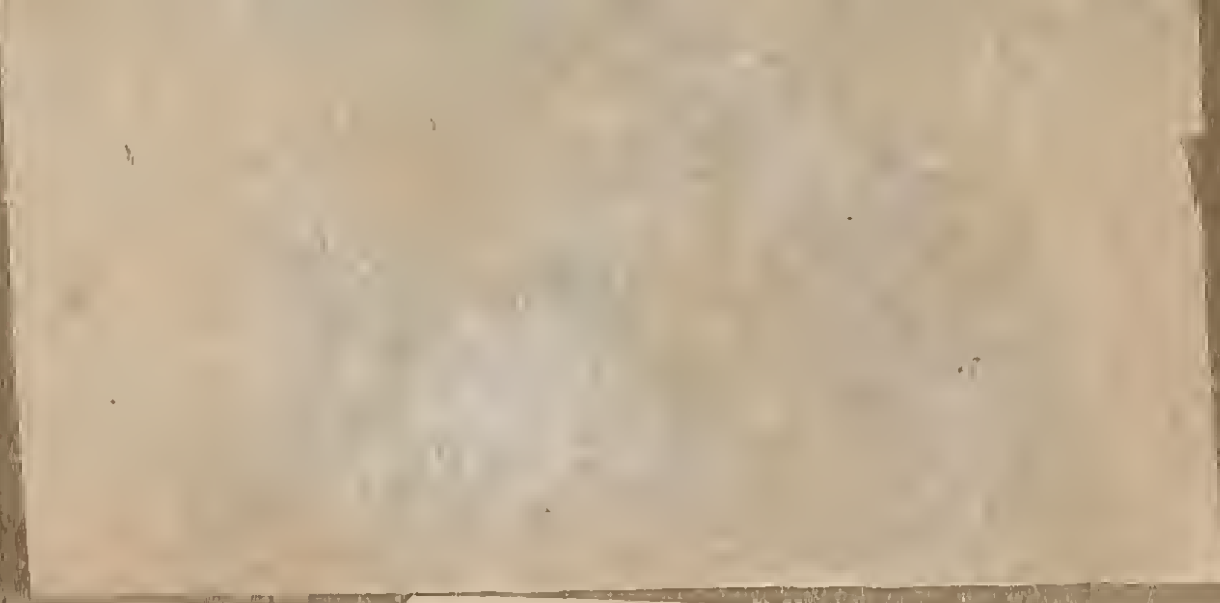


Solfonara



Jeune





*Tenebris*















*Atolla Phalanta*



*Atolla Phalanta*





*Artibeus phalaenopsis*



The "Broad Arrow"



11









The Widow



*Neptis agatha*





The Widow







*Composita*  
←



*Hyparcs Dithyia*



*[Faint, illegible handwritten text]*

*[Faint, illegible handwritten text]*

*Common*







a large family of these  
exceedingly beautiful



The colour on the tips should be maroon but no blue well put  
so only one of the colours that compose it is represented - blue added is *Pieris*





The colour on the tips should be mauve but no blue well put  
so only one of the colours that compose it is represented. Blue added to make mauve



*Proterops*



*Pieris*













March 21





12





Very rapid of flight the grandest of all, but the dirty white should be the



*C. ... ..*







the granules

was the



*Ch. rames bakeriani*







anthracite Tone







42. common



*Pieris agathina*







*Mr. [unclear]*





Common



*Lycaena Boeticus*





Common





















Monarch





*ma. ... near the*





very rapid, rare, always on trees



*Chorax Brutus*





1871, Mare,



Charaxes 13

- P



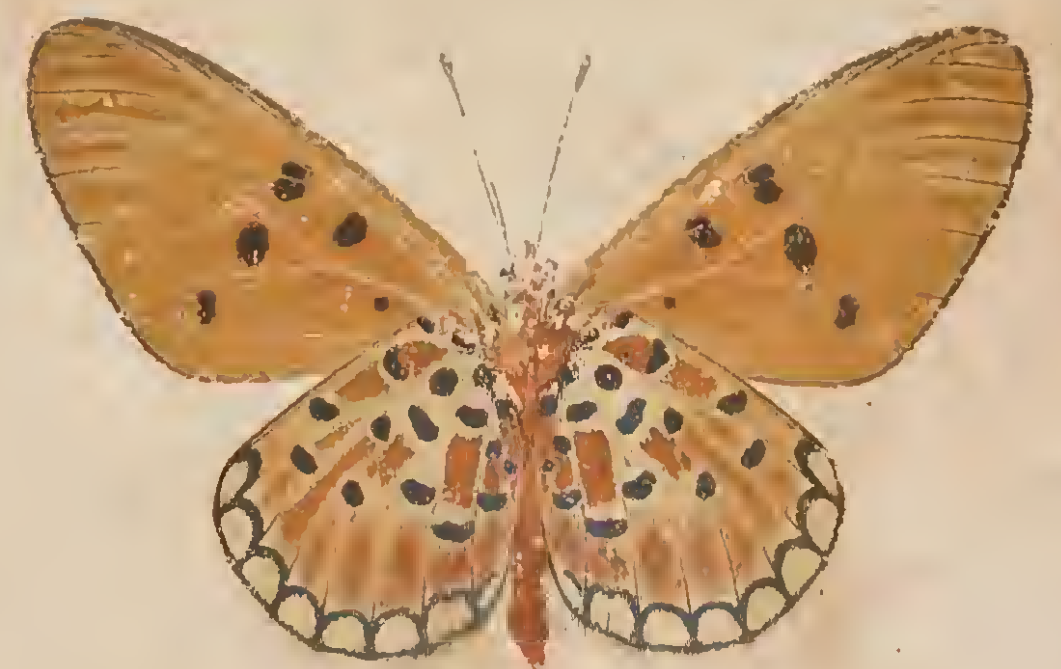




*Acrca* New Species











exceedingly beautiful  
size

*Philognoma veranae*



*excedit*  
*in*















*Musca domestica*





*Imula ...*





The "fire-glow"



*Eurytela* *divina*





The "fire-glow"







*Clasificata*



*Charaxes Pollux*





Clayton











*P. Demoleus*







"Jugyquoise"



*Ilmoricia celeia*



This is perhaps the most beautiful  
the blue is added as the natural and dazzling blue  
in the original will not print, it is a poor representation  
of the perfect specimen.



"Yucquoise"



This is perhaps the most beautiful  
the blue is added as the natural and dazzling blue  
in the original will not print, it is a poor representation  
of the perfect specimen.

