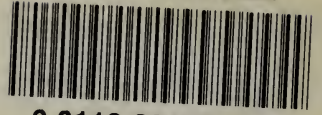


UNIVERSITY OF ILLINOIS-URBANA



3 0112 004458276

ATTENTION

This item is **FRAGILE**

The flaps, wrap or container
is to protect the contents
during use, handling or
storage.

PLEASE


1. Carefully open and close flaps.
2. Handle carefully to minimize damage.
3. Return to service point from which
it was borrowed. DO NOT RETURN IT
VIA A BOOKDROP.

CONSERVATION
U. of I. LIBRARY at
Urbana Champaign
JG/92



京學圖案

後篇上



Digitized by the Internet Archive
in 2017 with funding from
University of Illinois Urbana-Champaign Alternates

<https://archive.org/details/designsofkyotoco01hase>

THE UNIVERSITY
OF ILLINOIS
LIBRARY

745
H27d
v.1

天
天
工
與

清
新

蕪

天

穉

工

與

游龍藏人



745
H27d
v.1

禱齋學人



會館川西樂

成都
四川西康
成都

作樂

樂

樂

樂

樂

海士三三三三三

發行所 田山 田共 艸堂

京都市寺町通二条

所寄

權

印發行兼

山田直三郎



京都市寺町通二条三十九番一戸

著作

著作

長谷川契

今

年九月十日發行

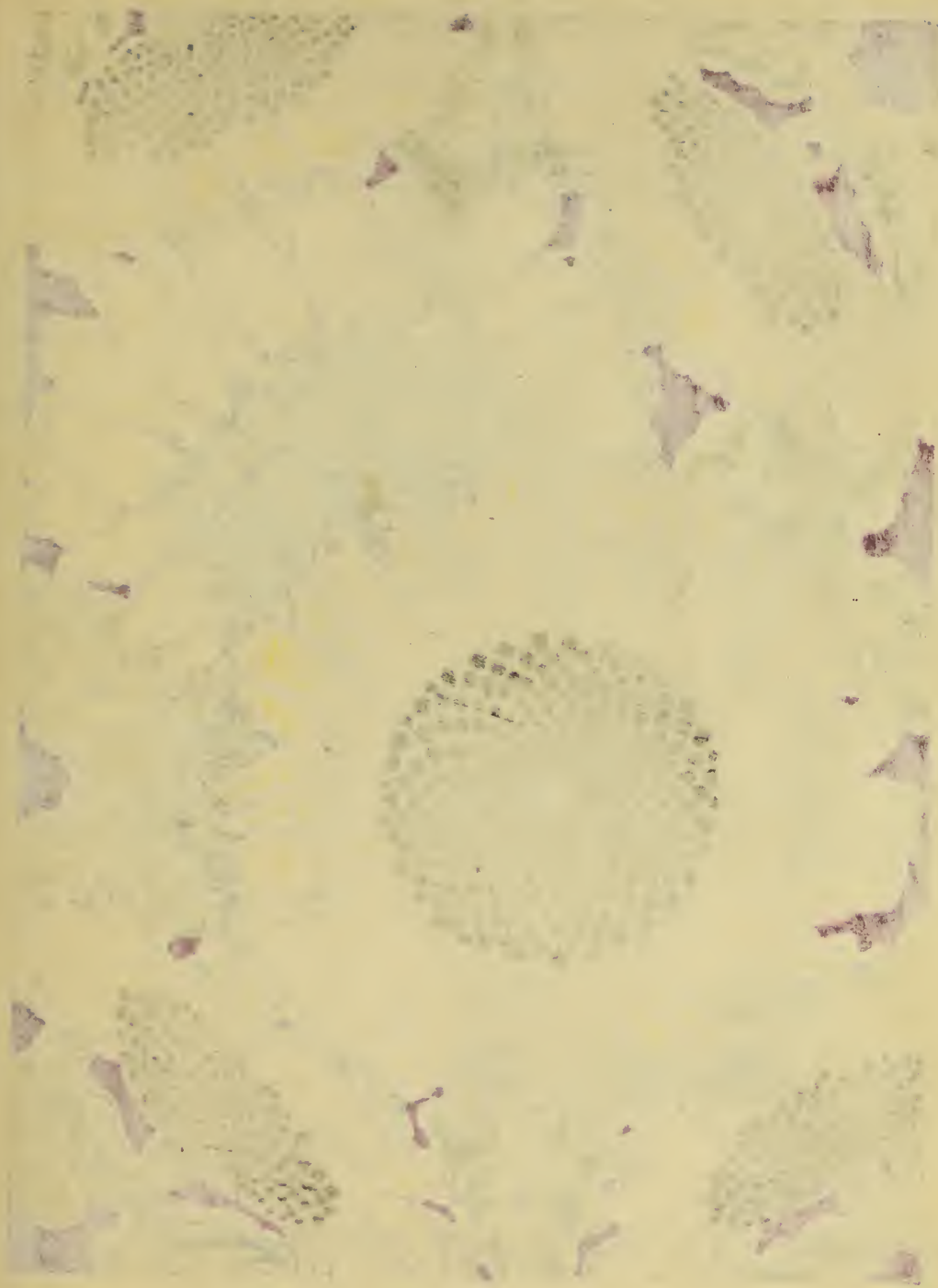
明治三十七年九月五日印刷

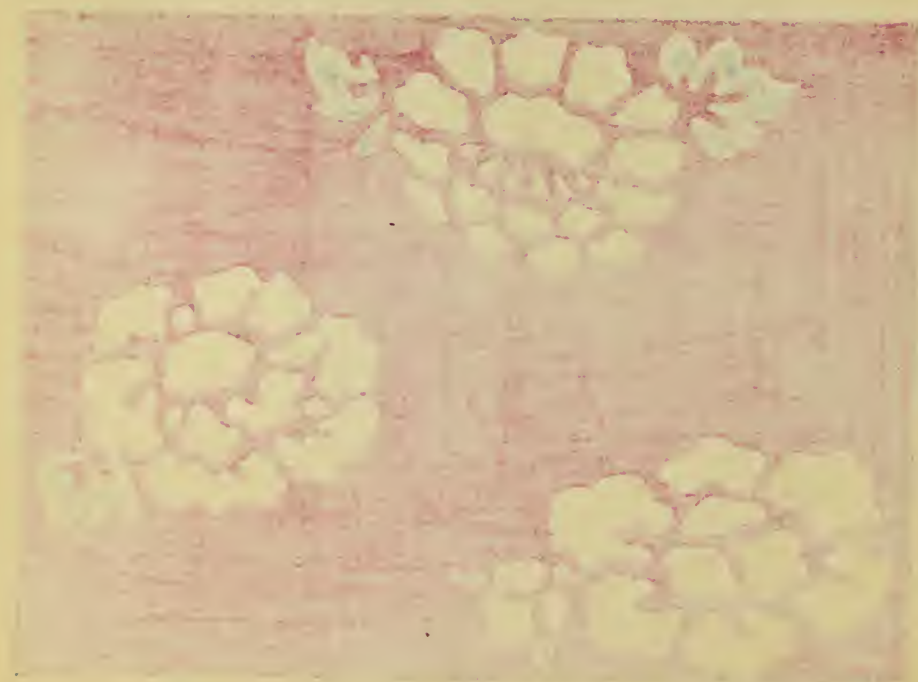


12N 12
L
1

12
2
3
4

12N 12
L
1







牡丹花



牡丹花



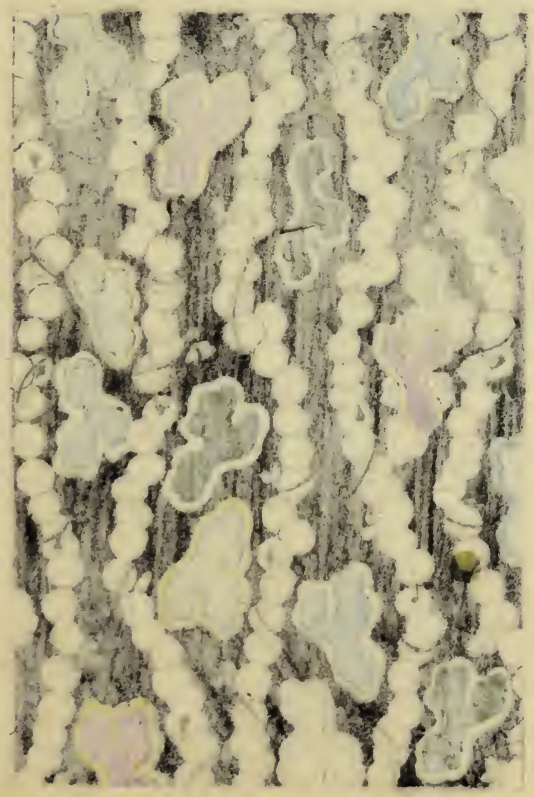
燭天南中



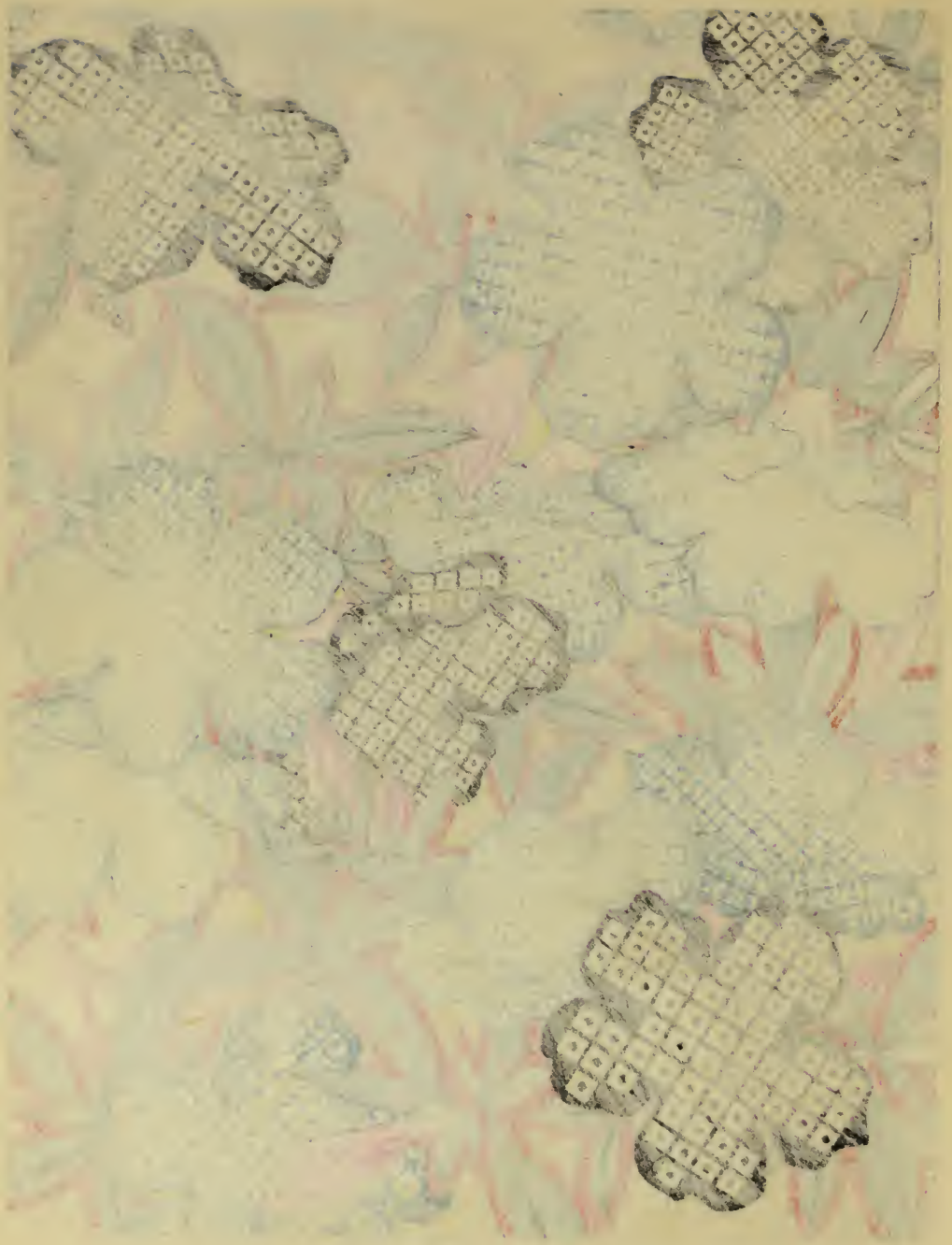
桐
野
菊

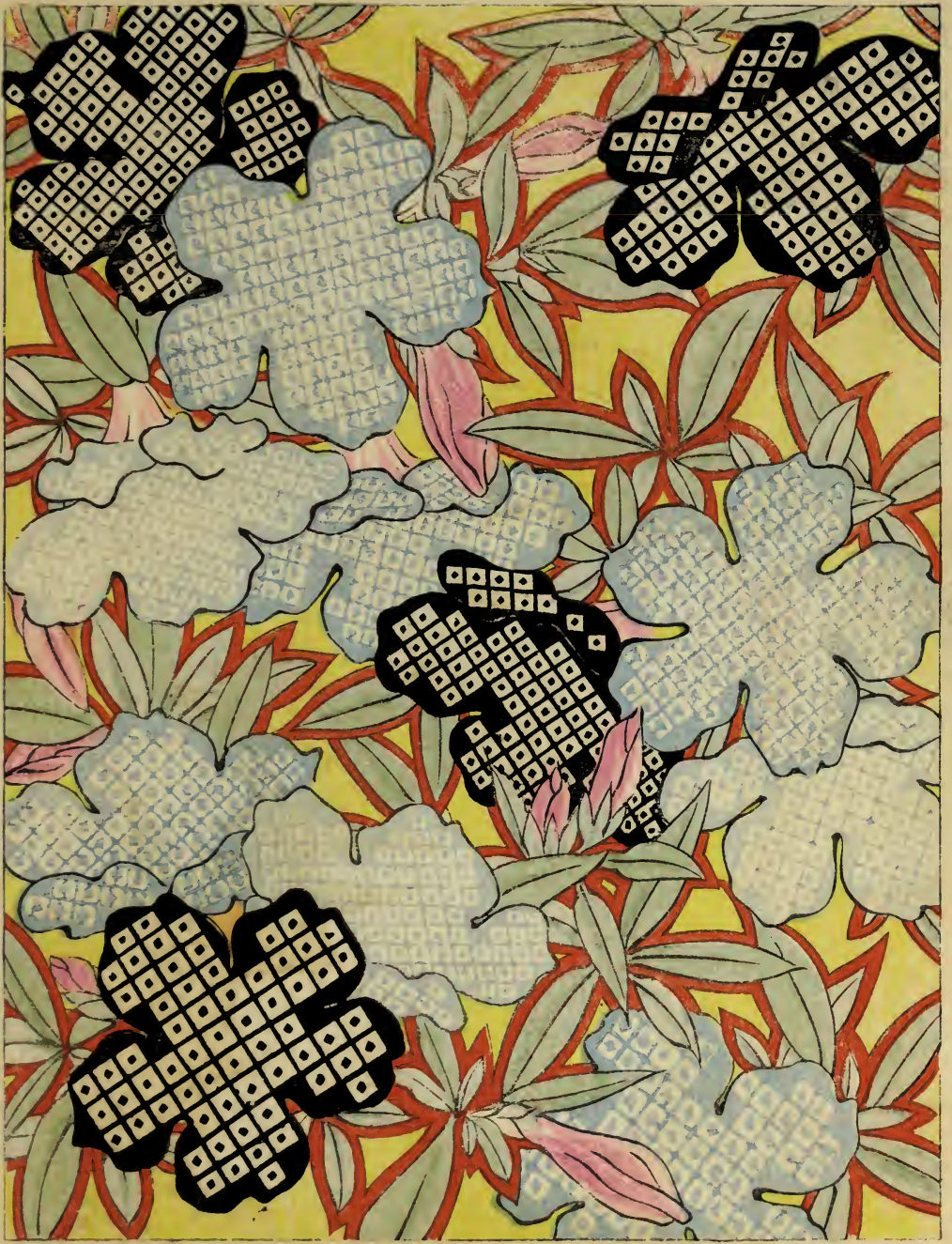


牡丹图轴



牡丹图轴





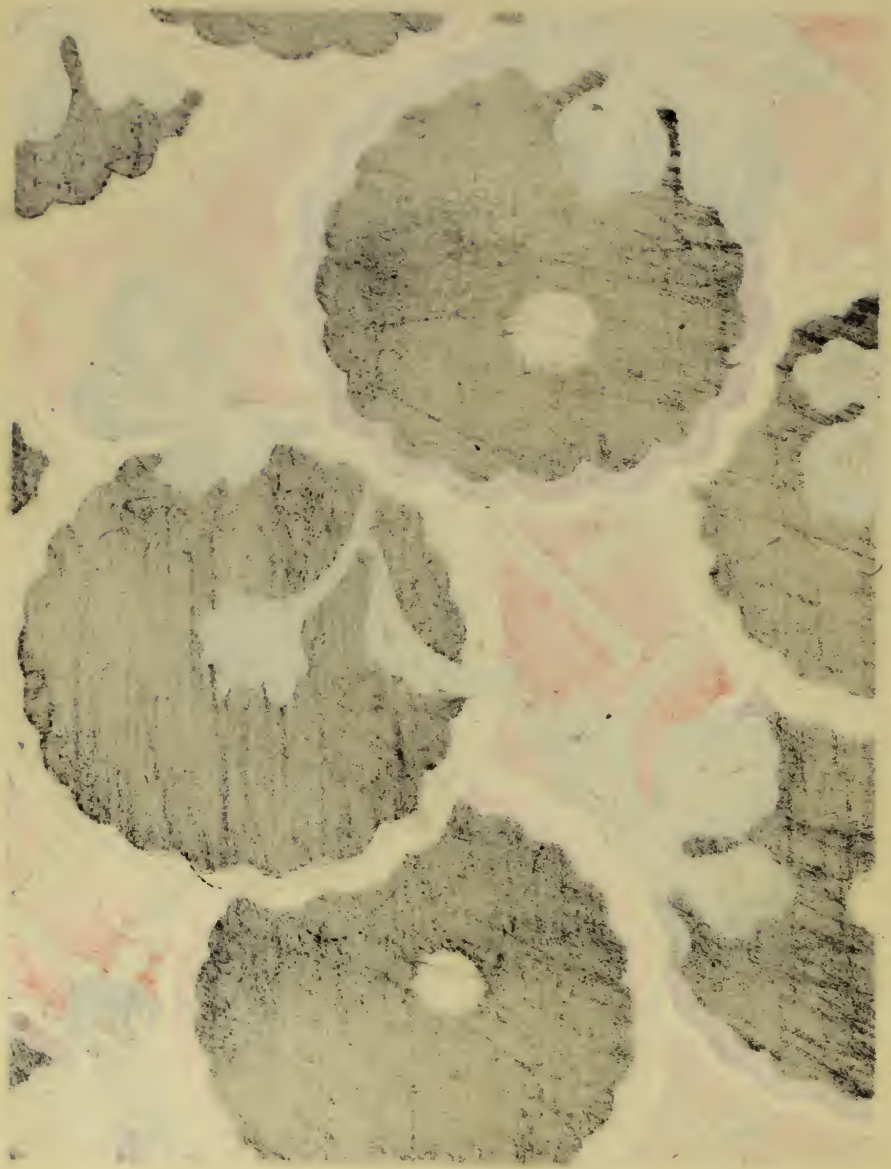
1/2

1/2



19 4 20 21







紫

花

文



松

枝

葉

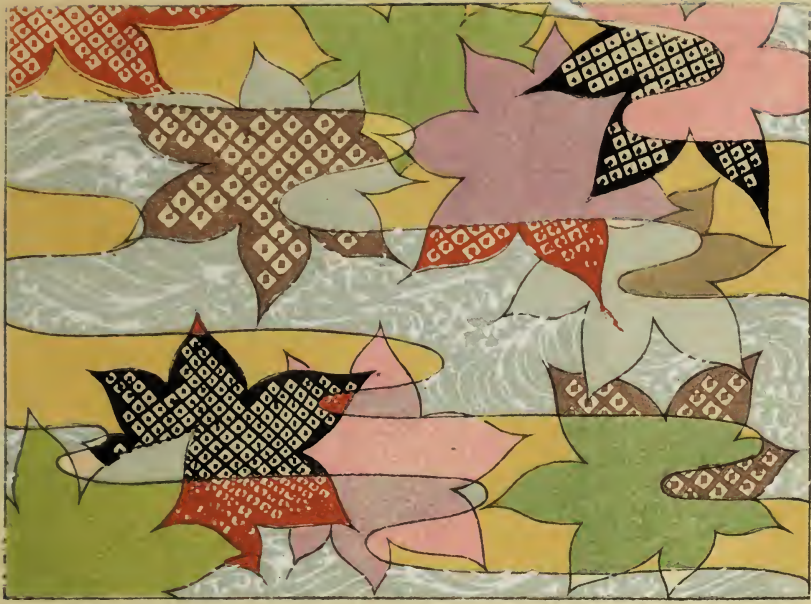


2

3

4





26

U

CH



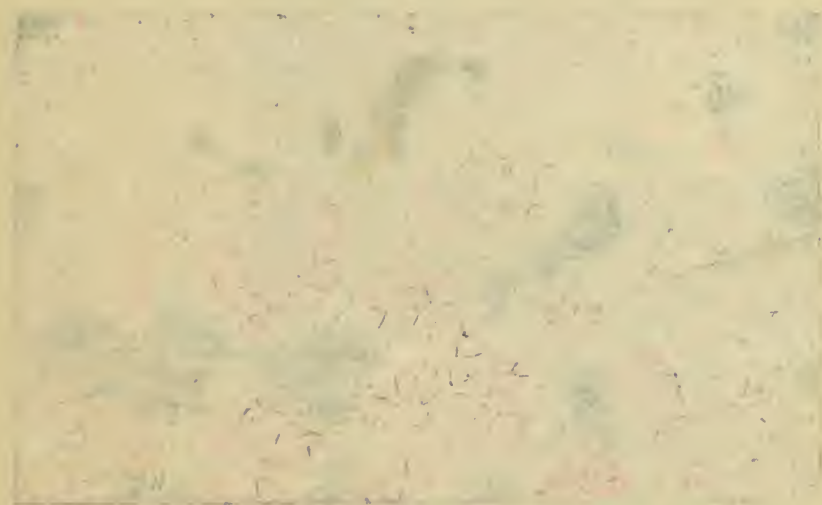
丁
子
集



花 々 々

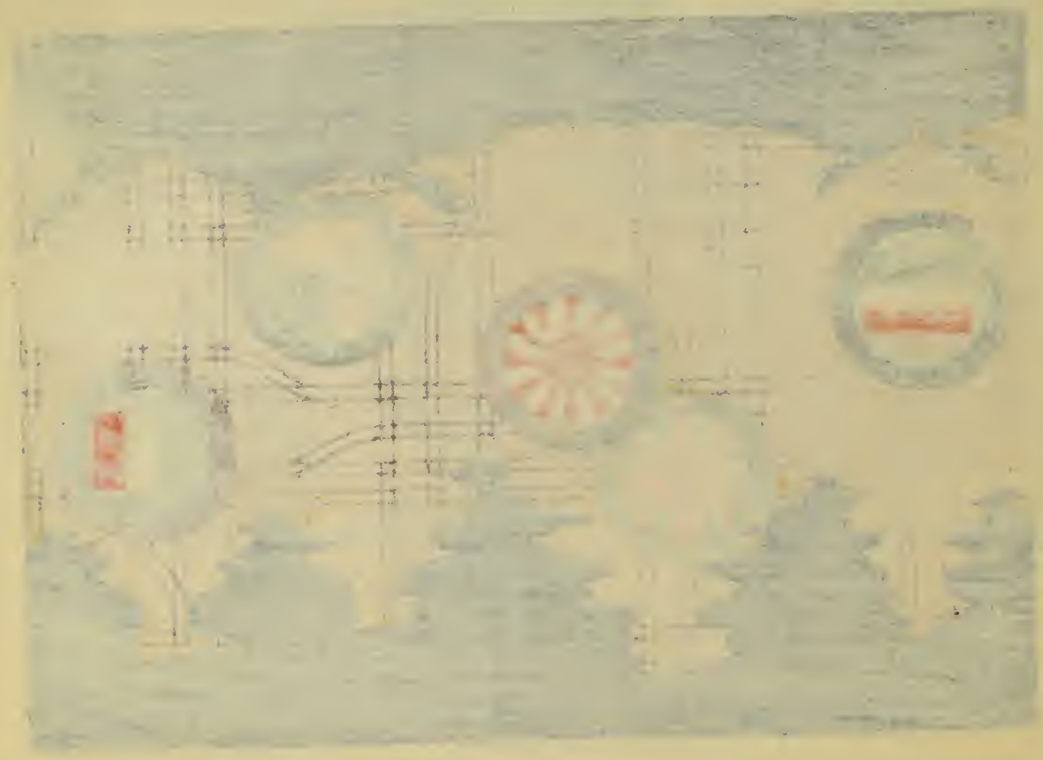


花 々 々



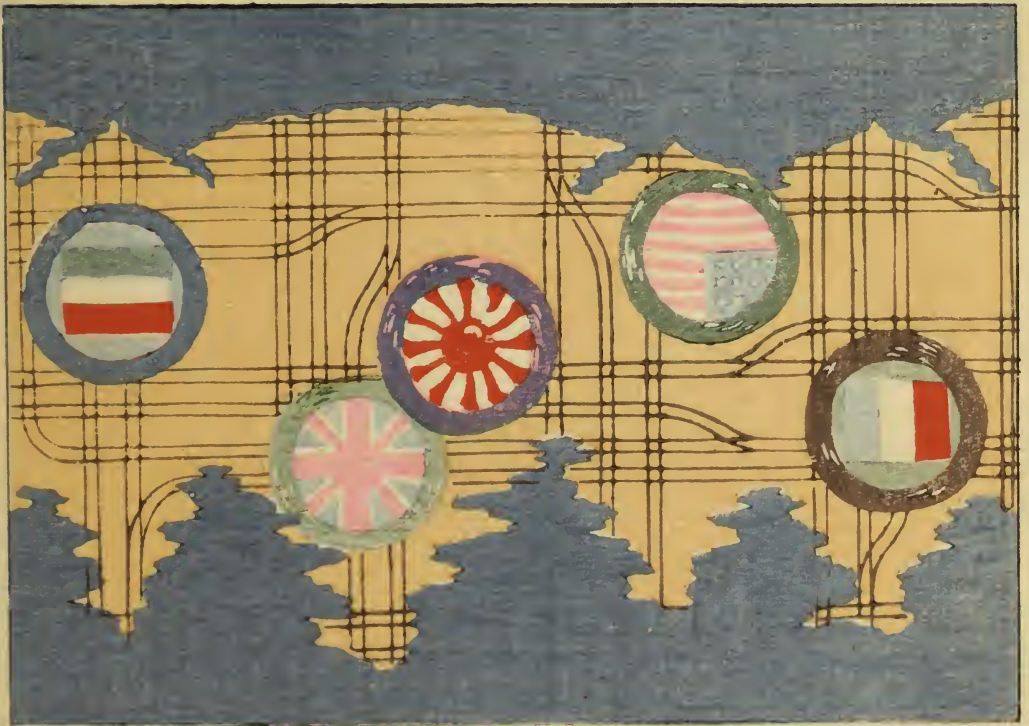
18







丁 尔 菜



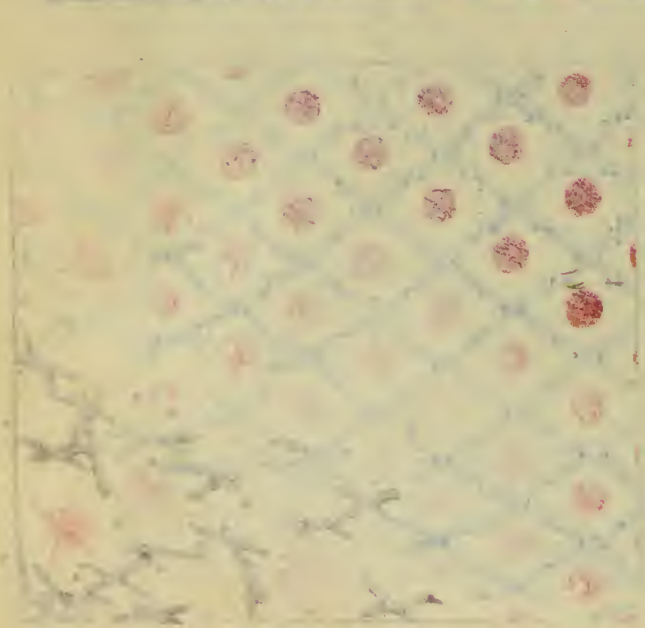
目 一 伸 路

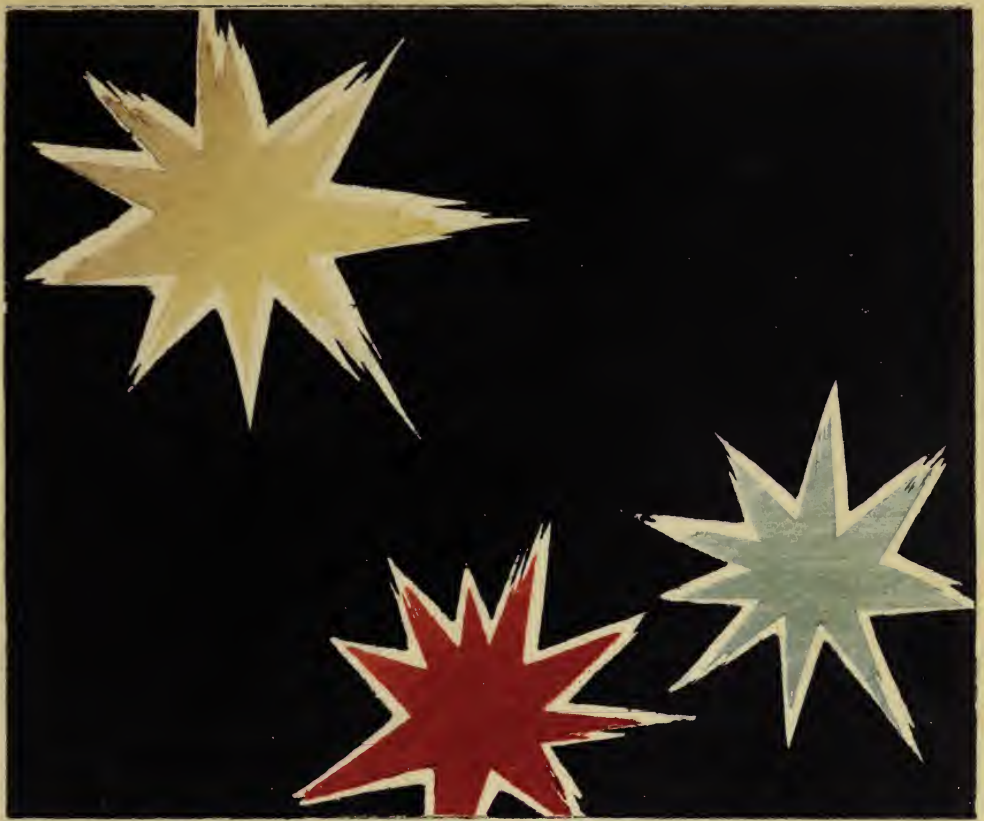


菊

花





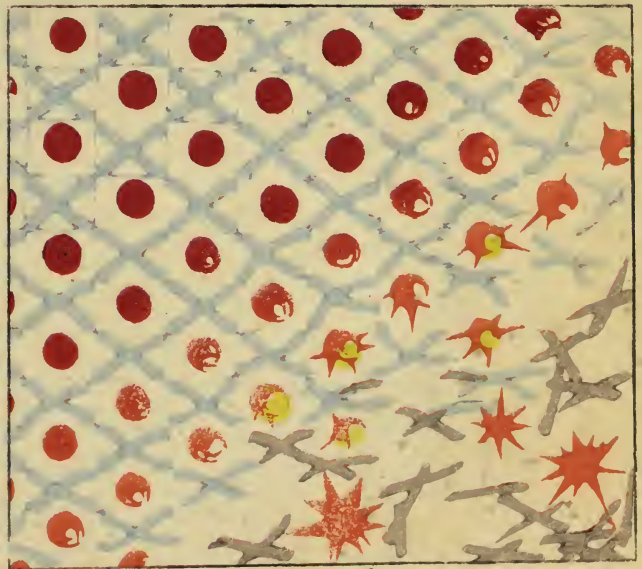


星

大



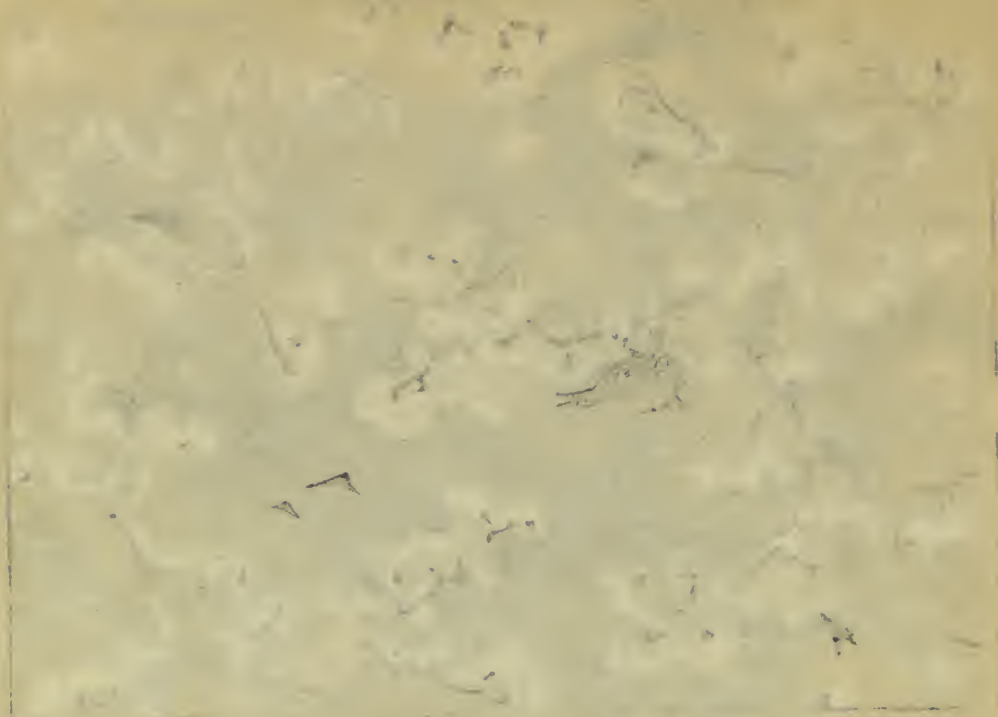
車
海
陸



大
破



飛怒浪激



大 珠 經 卷 一



卷 一



木杵飛鳥



江天飛鳥



秋

三







50

51

林野の夢



1. 林野の夢
 2. 林野の夢
 3. 林野の夢
 4. 林野の夢
 5. 林野の夢
 6. 林野の夢



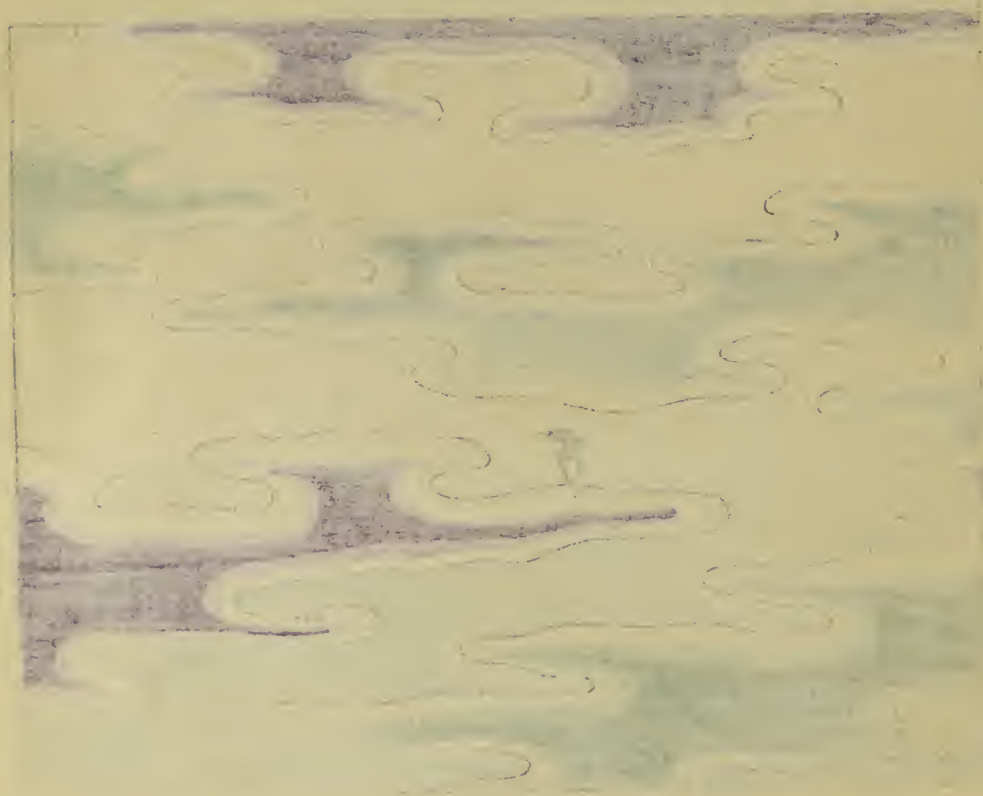
Handwritten text, possibly a date or name, written vertically on the right side of the top image.



Handwritten text at the bottom of the page, including the name 'Mrs. J. C. ...' and other illegible characters.

11

卷之二



山水图



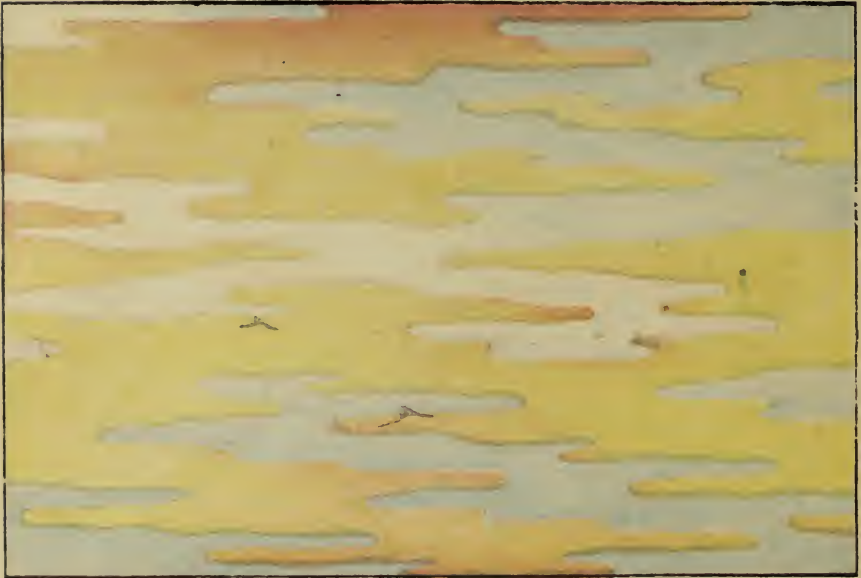
之 洋 波 穩



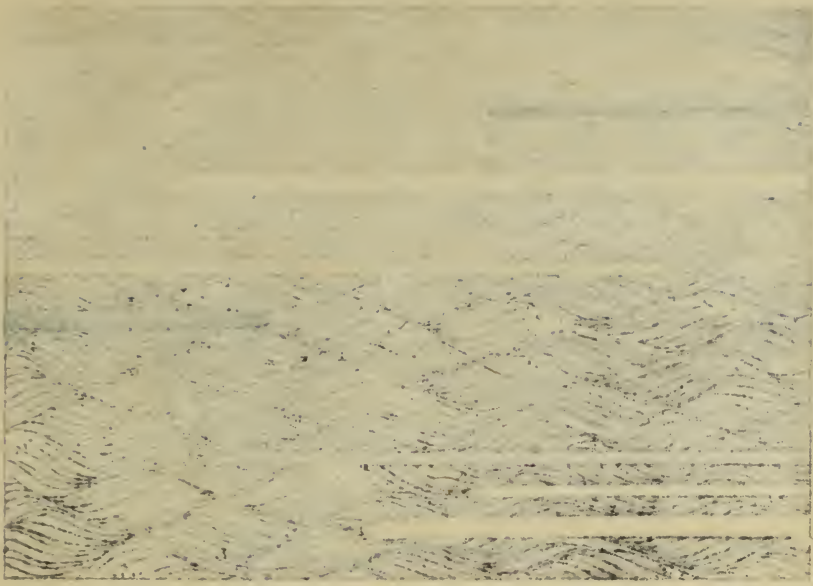
之 海 浪 月



之 格 波 垂



之 垂 波 格



子 辰 辰 子



子 辰 辰 子

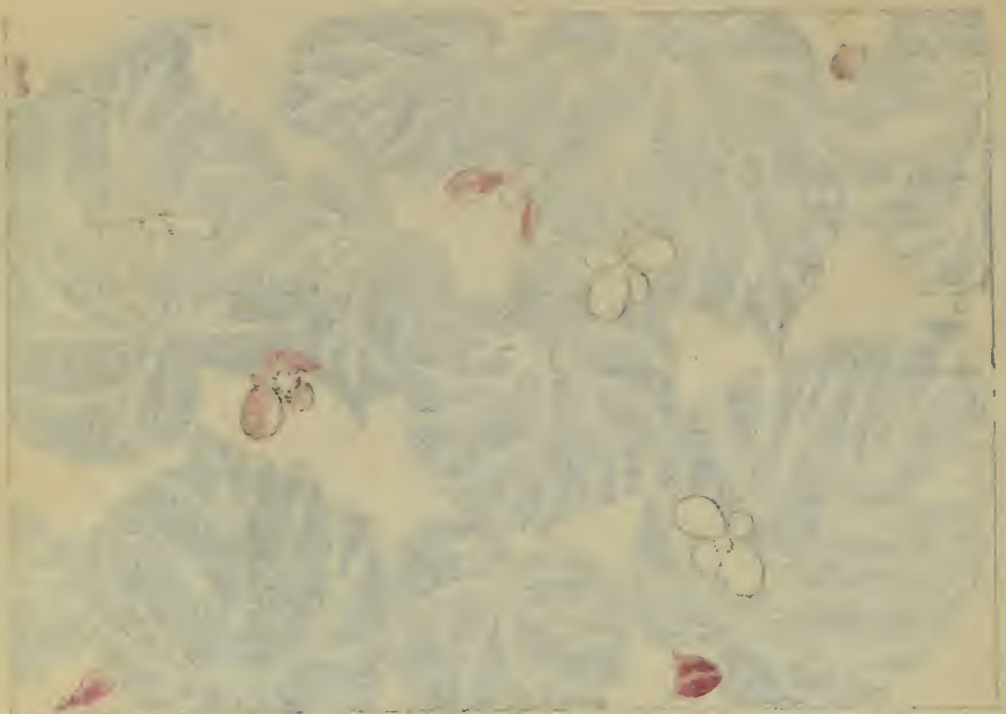


Figure 1: Micrograph showing various cellular structures, including elongated cells and clusters of small, rounded cells.



Figure 2: Micrograph showing a dense network of cells, with prominent purple and red stained structures, possibly representing specialized cells or vascular elements.



喜洋洋 白紅綴綠



喜洋洋



七

七

七



此图采自日本大正年间五五五号大正日本大正年间五五五号大正日本大正年间五五五号
 3 像之不出能像一切一光殿斗力领英若卷乃



加 奈 危



口
 女
 之
 子

口
 女
 之
 子







天

天

天竺方

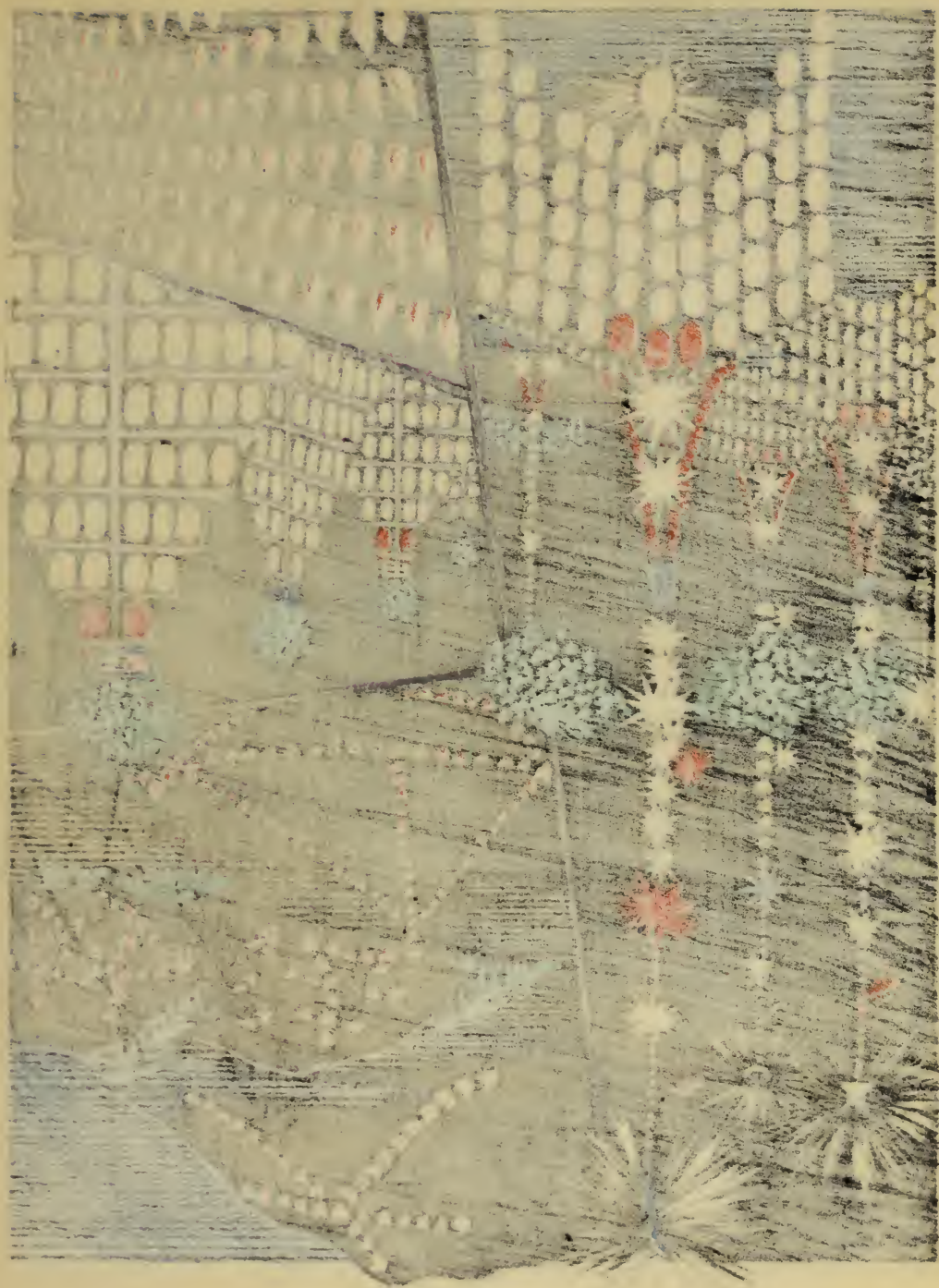
金家二十

大法妙船



天竺方金家二十

飾以燈之華古於茶也





22

23

24

25



ff 2 3 4



2 3 4 5



春は遊ばす



1911



井 岩 印



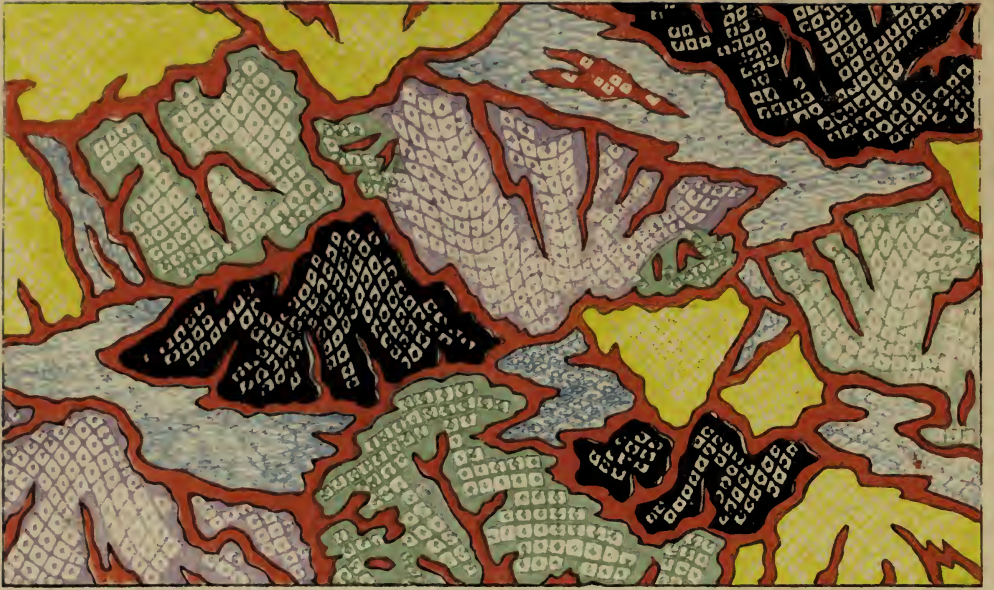
井 岩 印



華 錄 卷

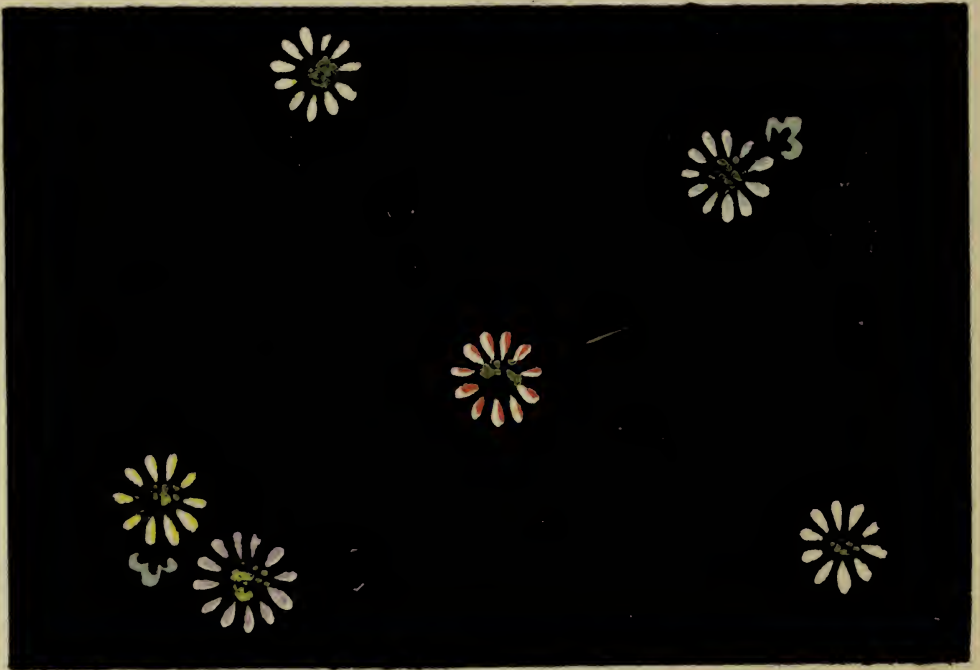


一 卷 之 四 十 九



正

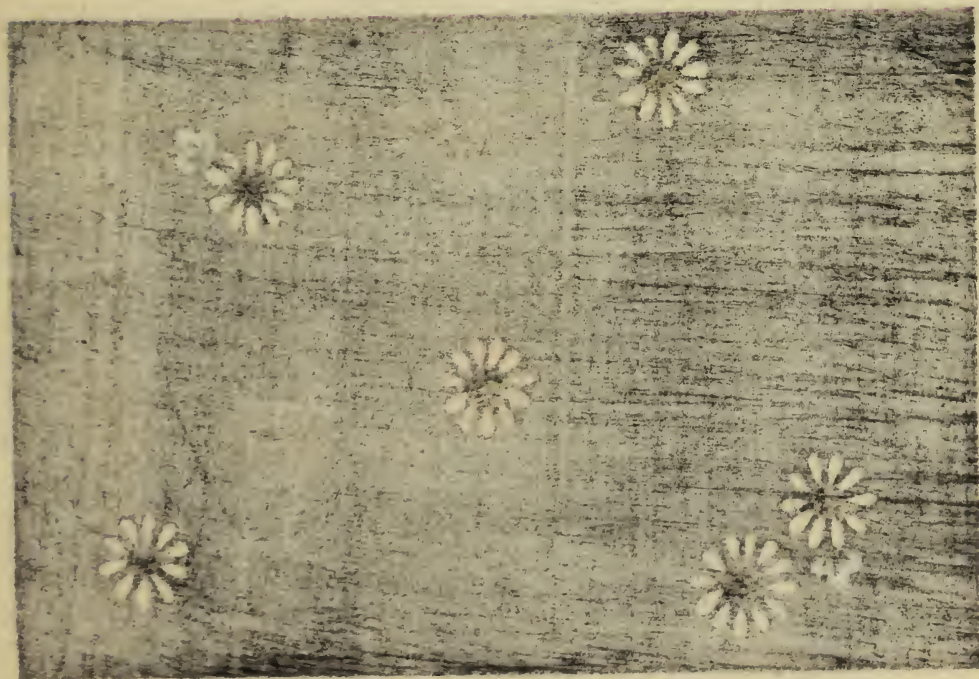
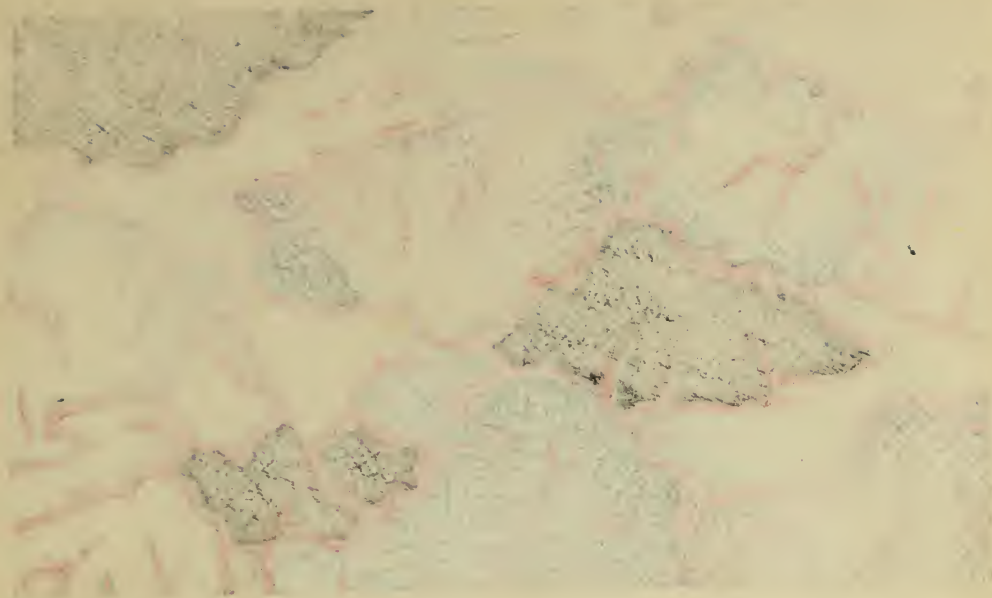
六

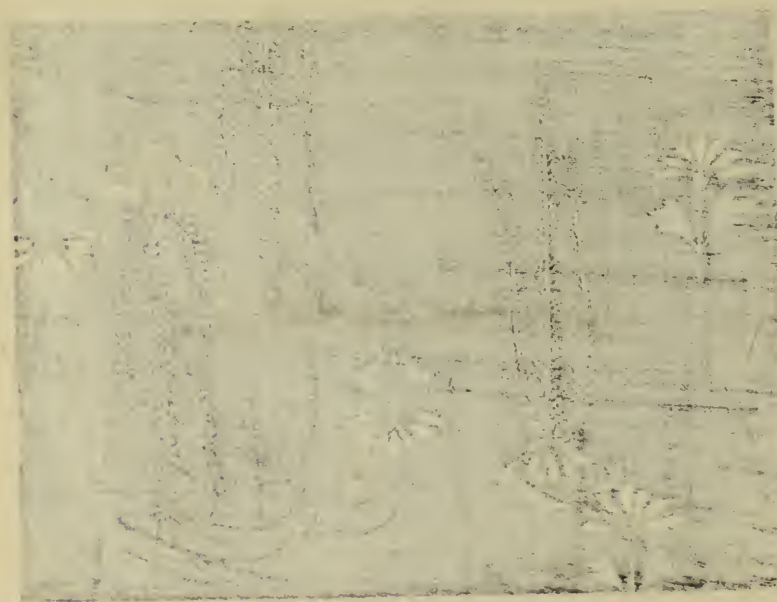
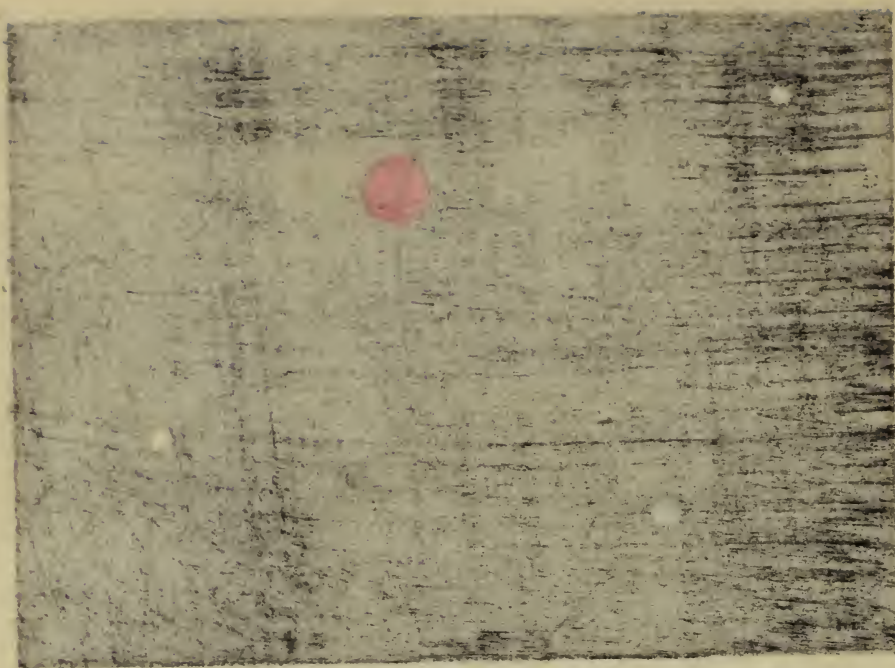


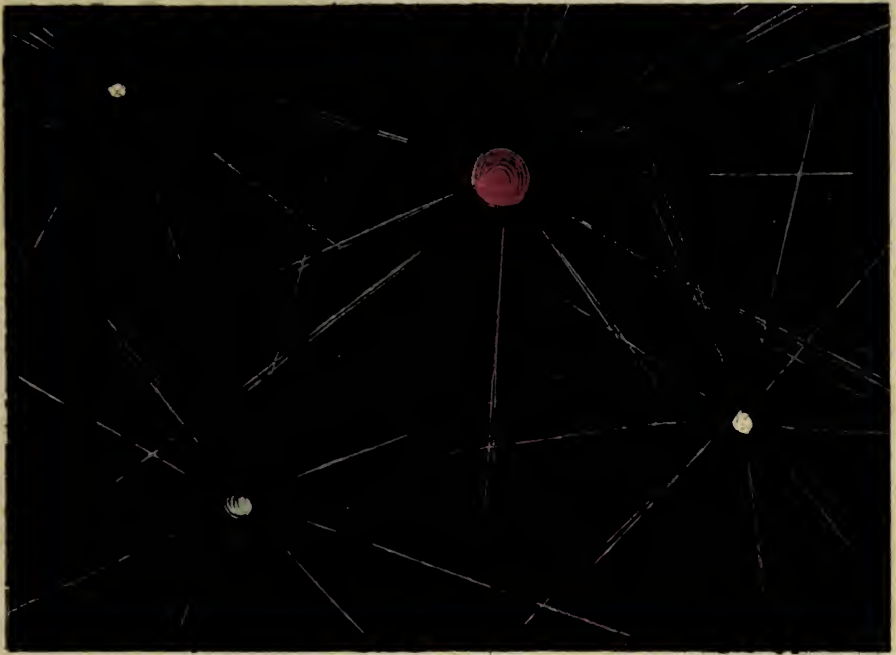
慶

日

卯



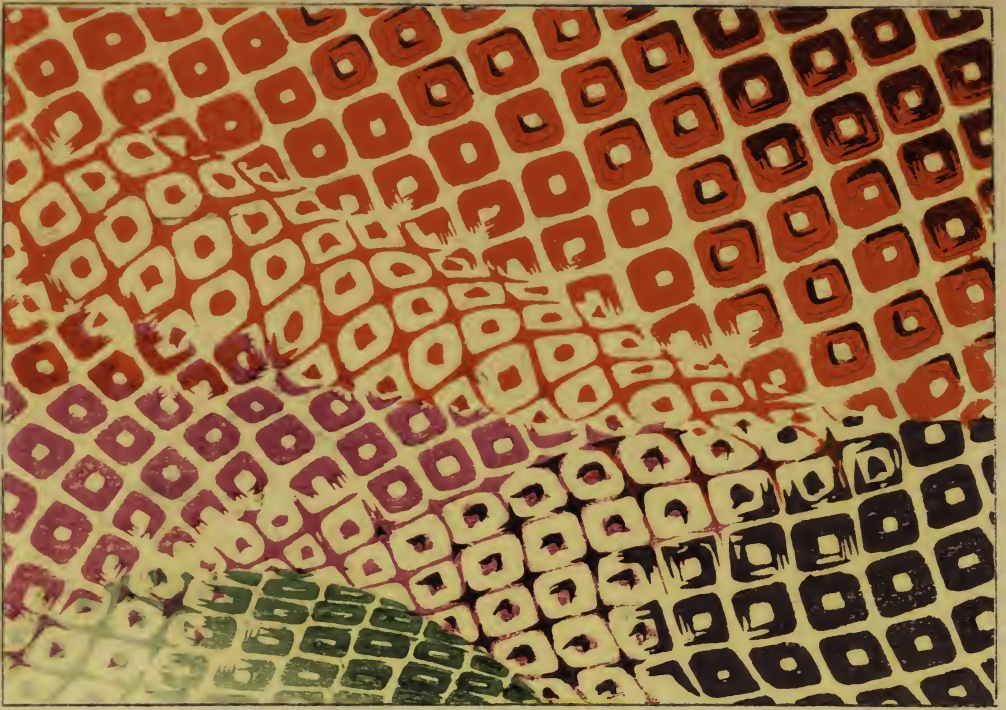




石 臺



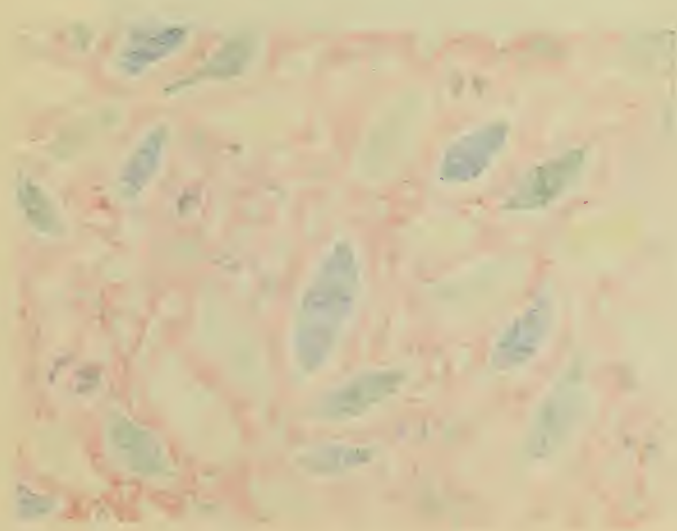
石 臺

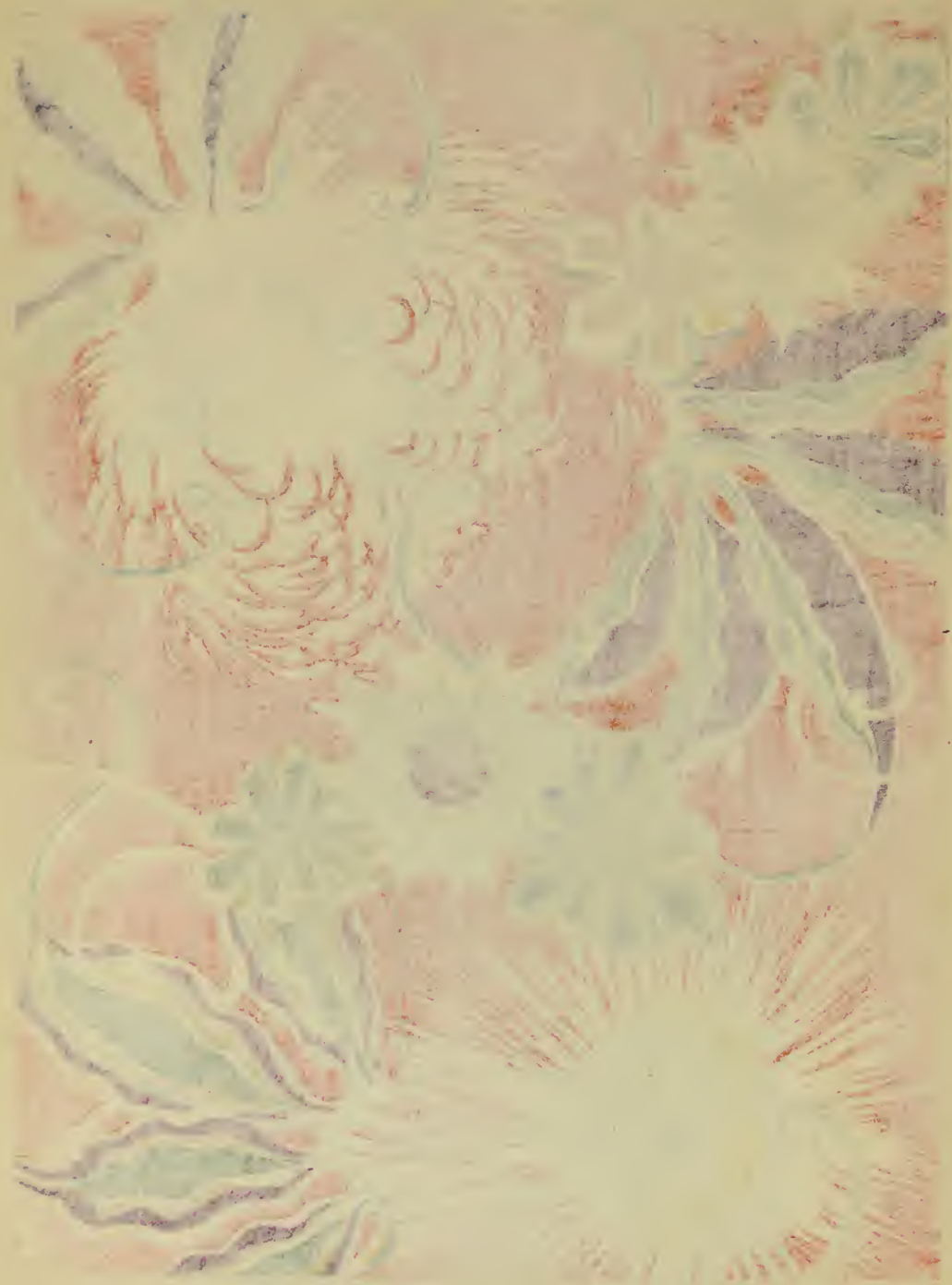


回正 { 線光 鑲嵌



57
58







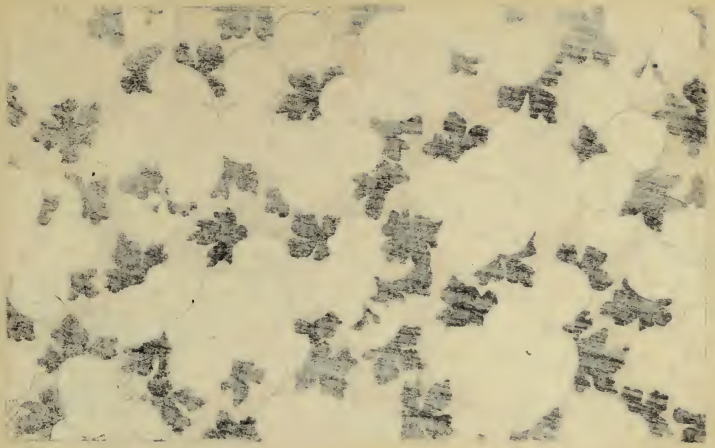
文 庭 菊



蔓 草 子



鳥 草 子









夢

相



竹

五



此圖之竹
 乃係用各色
 絲綢織成
 其色澤鮮明
 且具立體感
 實為中國
 絲綢工藝之
 一絕也
 光緒二十九年
 十月
 日
 小

小





全大極殿上ニ
 奉掲燈籠ノ文
 星遊
 十二宮ノ寫
 此大極殿第ハ
 四神族ノ額紙ノ
 文ナリ

秤量宮



双女宮

蝎虫宮

弓宮

宝瓶宮

双鱼宮

二宮

三宮

男女宮

獅子宮

螃蟹宮

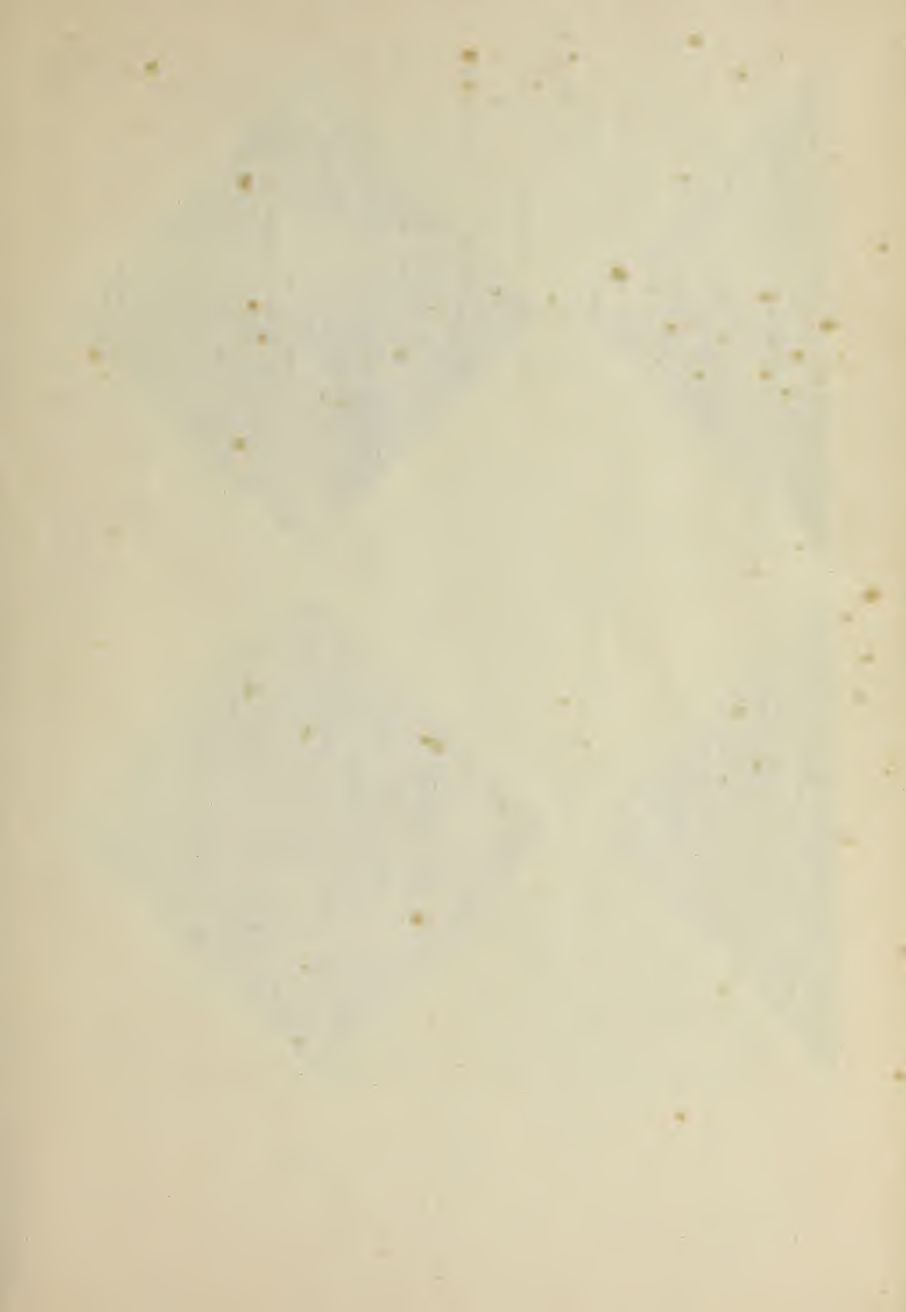
白羊宮



瑞獸之形也
 雄曰鳳 雌曰凰
 狀如鷄 有五色文
 曰白虎 狀如虎
 白毛 赤尾 負日月
 負八卦 解
 北 玄武 狀如龜
 南 朱雀 狀如鳥
 西 白虎 狀如虎
 東 青龍 狀如龍
 四神 鎮守 宮殿
 平安

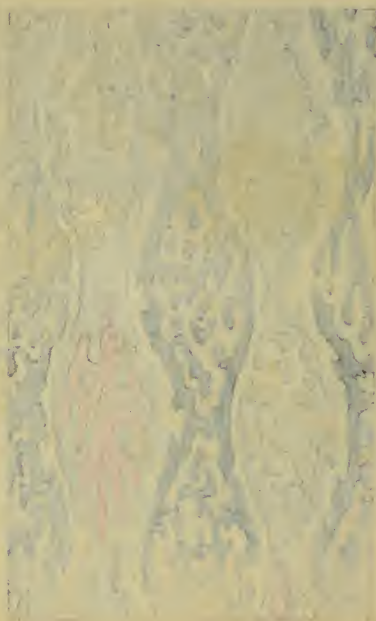




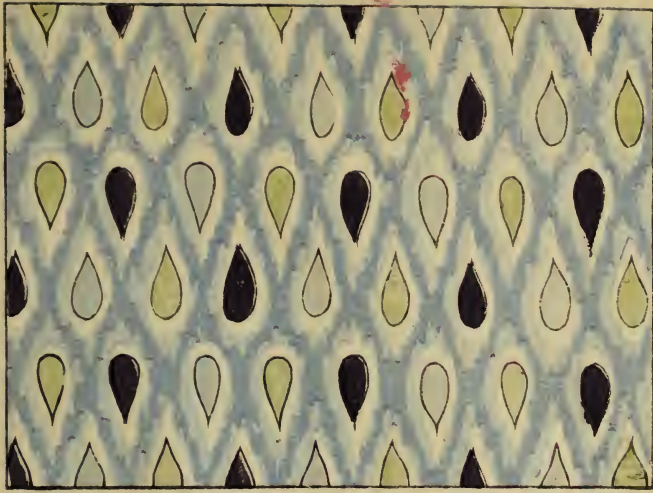




蝶形



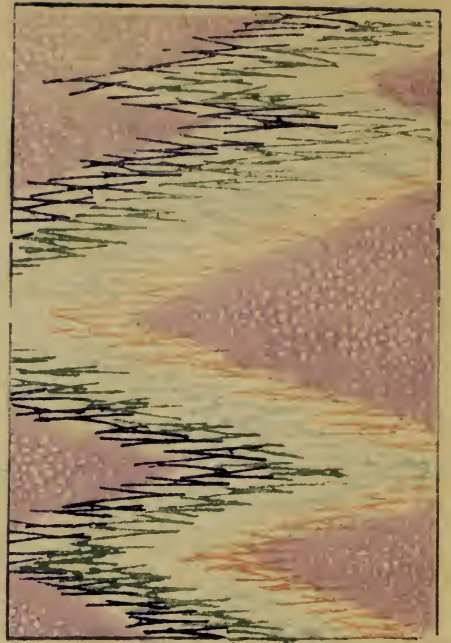
舞人



傳五列艦



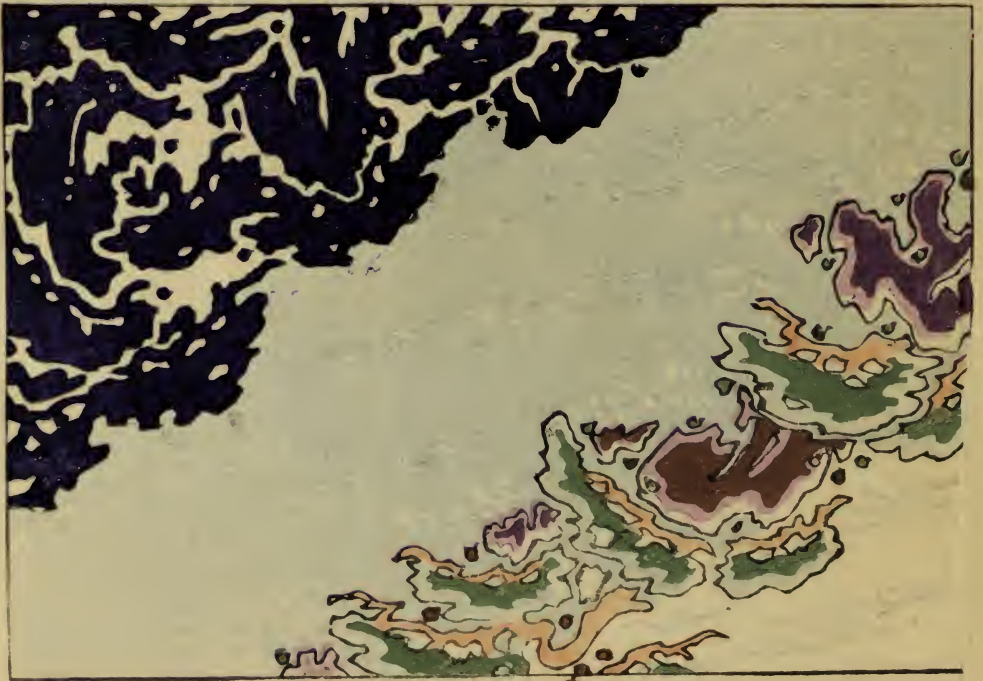
傳五列四



石川



廣松



下
上



Figure 1

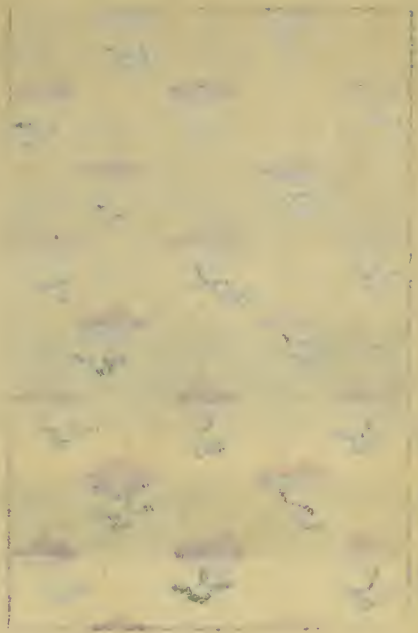


Figure 2

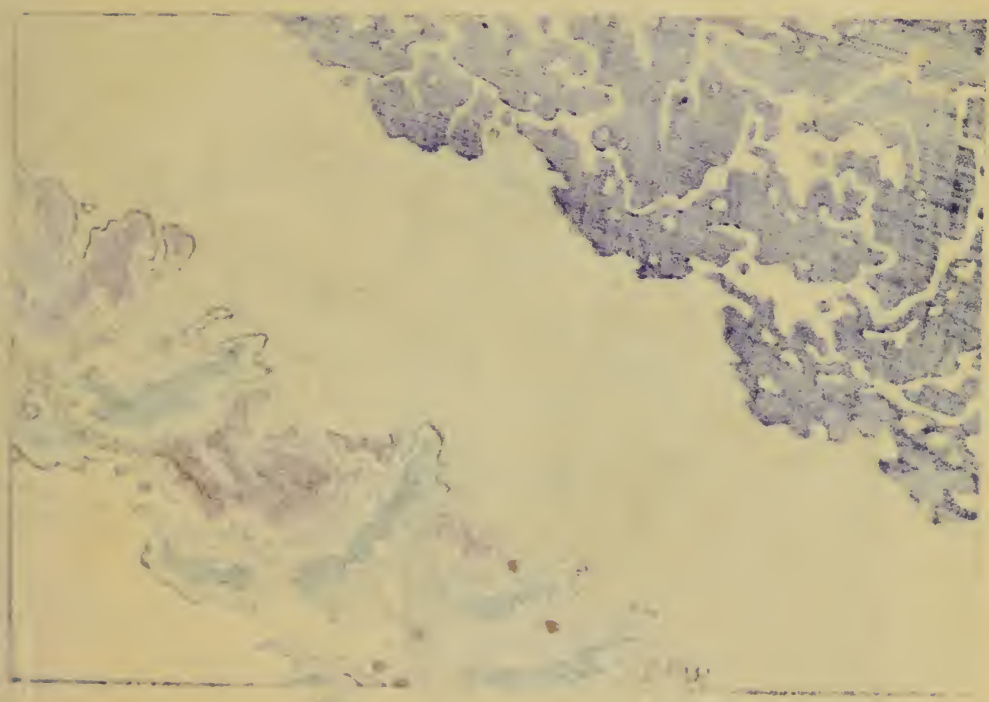
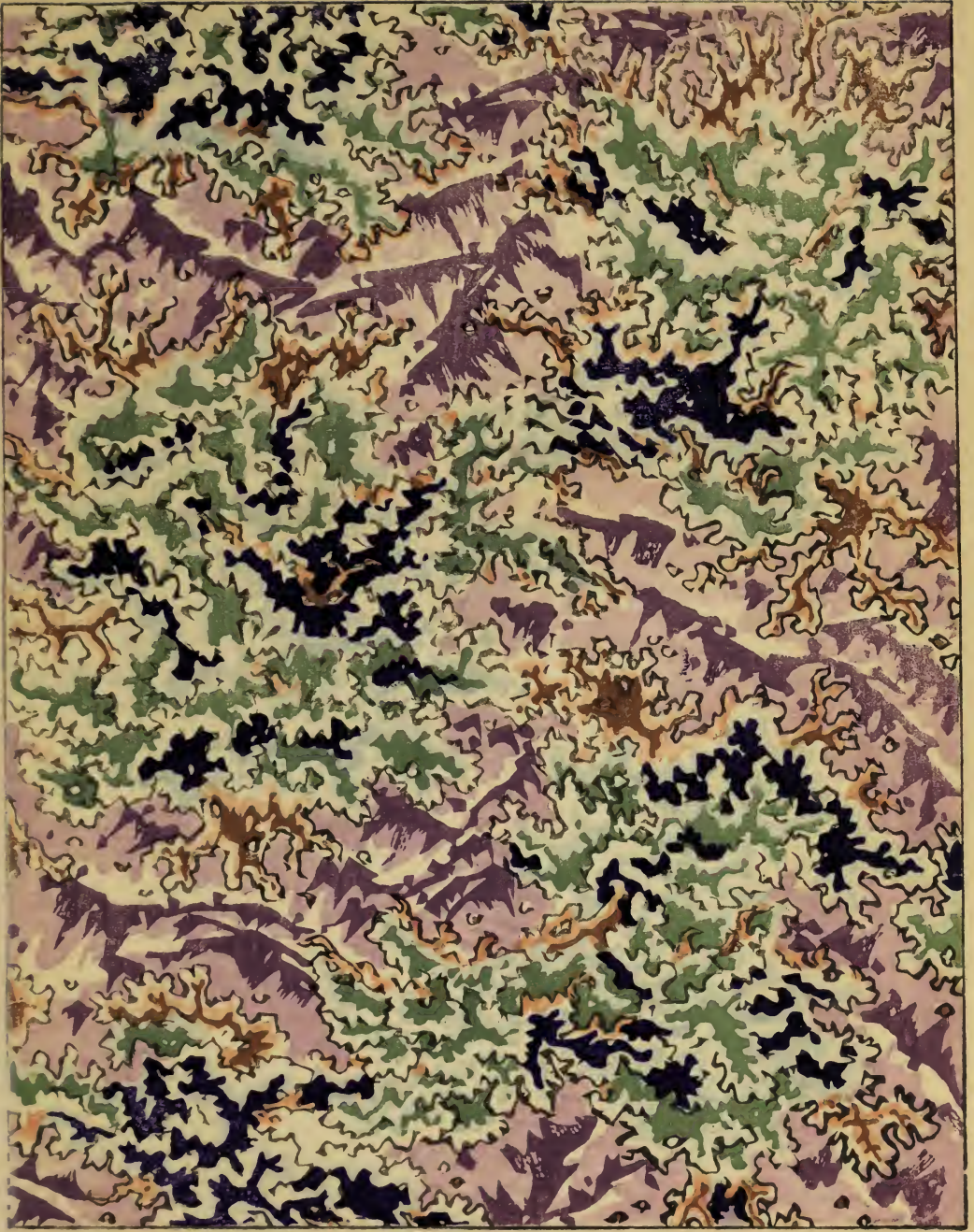
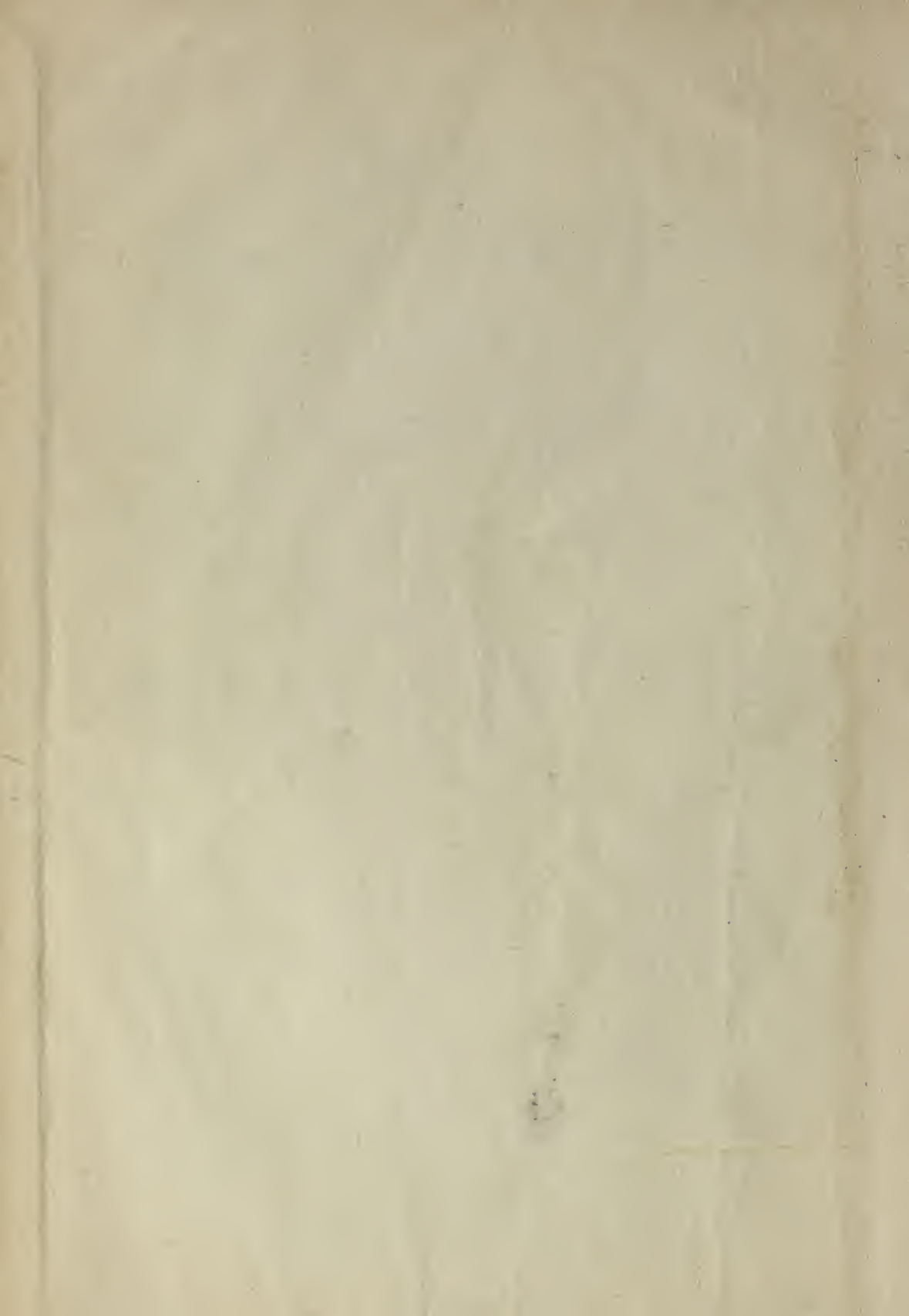


Figure 3





Handwritten characters or symbols, possibly a signature or initials, located below the main image.



745
H27d
v.1



The person charging this material is responsible for its return to the library from which it was withdrawn on or before the **Latest Date** stamped below.

Theft, mutilation, and underlining of books are reasons for disciplinary action and may result in dismissal from the University.

To renew call Telephone Center, 333-8400

UNIVERSITY OF ILLINOIS LIBRARY AT URBANA-CHAMPAIGN

JUL 28 1987

AUG 31 1987

MAR 20 1992

MAY 26 1992

Apr 20

CENTRAL CIRCULATION BOOKSTACKS

The person charging this material is responsible for its renewal or its return to the library from which it was borrowed on or before the **Latest Date** stamped below. **You may be charged a minimum fee of \$75.00 for each lost book.**

Theft, mutilation, and underlining of books are reasons for disciplinary action and may result in dismissal from the University.

TO RENEW CALL TELEPHONE CENTER, 333-8400

UNIVERSITY OF ILLINOIS LIBRARY AT URBANA-CHAMPAIGN

SEP 04 1987

AUG 17 1998

~~BUILDING USE ONLY~~

APR 11 2008

When renewing by phone, write new due date below previous due date.

L162

